

Digital Artwork Guidelines

Different printing stocks may cause variations in colour matching.

Software Supported

Please supply layouts in QuarkXpress v4 - 6.5, Adobe Illustrator CS2, InDesign CS2 and Photoshop CS2 for the Apple OSX.

Artwork Size

Supply artwork for each panel to scale, at 25% of the final output size. Please refer to the following pages for specific dimensions on each display.

Bleed

Add 2mm bleed to layouts.

Scans

Any scans should be supplied 100% at size in the picture box specified within Quark/InDesign. *i.e.* if the picture box is 200 x 500mm then the scan should be that size and placed into Quark at 100%. Please **DO NOT** enlarge any scans bigger than 115%. All scans to be minimum 300dpi resolution, 8-bit CMYK colour space, saved as .TIF, .EPS.

Fonts

Please supply all fonts used in the artwork. Use only Type 1 Postscript fonts. Include any embedded fonts within imported Illustrator files. Where possible save fonts as outlines in Illustrator. **DO NOT** use Truetype (Type 3) or Multiple Master Fonts, as they fail to RIP (process) and we will not be able to print your job. **DO NOT** use font embellishment (artificially boldening, italicising, outlining etc.) in QuarkXpress, InDesign, Illustrator or PhotoShop.

Solid Colours

Please specify all solid colours as Pantone references.

Matching Pantone Colours

Because the banners are printed CMYK we cannot match Pantone colours exactly, however in practice we can get very close to the majority of Pantone colours. In critical situations *i.e.* matching a corporate colour, we prefer to supply colour proofs for approval. Please allow an extra 1–2 days to process and deliver.

Supply Colour Proofs

The banners are printed on CMYK inkjet machine to achieve the correct colour balance it is essential that we receive accurate colour proofs or swatches to match to. Colour run outs can be provided to check colour balance. Please allow an extra 1–2 days to process and deliver.

How to get artwork to us

Physical Delivery. Send it by courier or special delivery on Apple formatted Zip100 or CDR/CDRW or DVD.

DO NOT post artwork to us using the normal Royal Mail services.

Digital Delivery

Please always include a low res .PDF proof with instructions in a Read Me file. Small files (under 10mb in total) can be emailed to: info@d4display.com. Larger files can be uploaded to our iDisk or FTP server: please call us for further information.

Digital Artwork Guidelines – Banner / Artwork sizes for Standard, Wide, Curved and Double Displays

All artwork files for each panel should be supplied at 25% of the finished dimensions described below.

Non-safe type areas: where the pocket is formed. Located 60mm in from top and bottom edges.

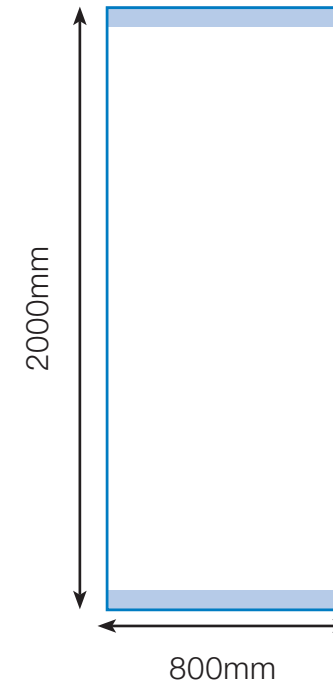
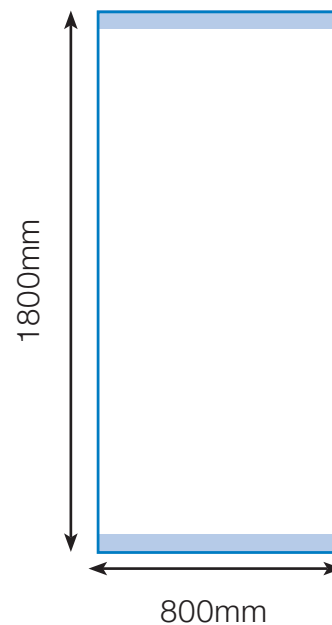
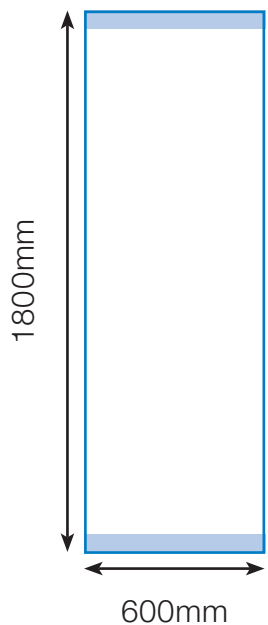
Display model

**D4.6
D4 Double 60**

**D4.8
D4.6 - 80W
D4 Double 80**

D4.8T

**Finished banner
visual area**



Artwork size

150mm x 450mm

200mm x 450mm

200mm x 500mm

Digital Artwork Guidelines – Banner / Artwork sizes for Standard, Wide, Curved and Double Displays

All artwork files for each panel should be supplied at 25% of the finished dimensions described below.

Non-safe type areas: where the pocket is formed. Located 60mm in from top and bottom edges.

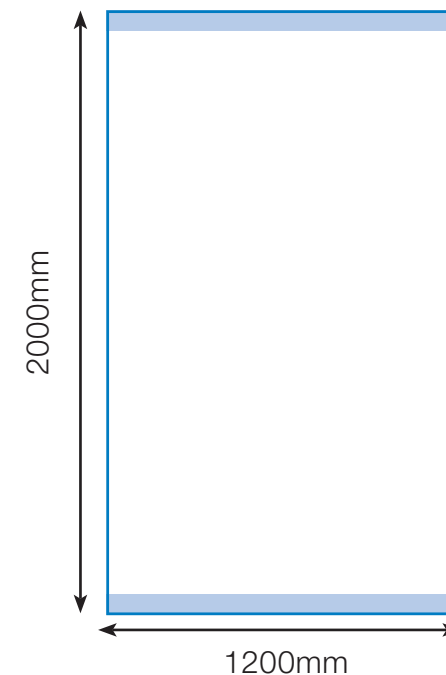
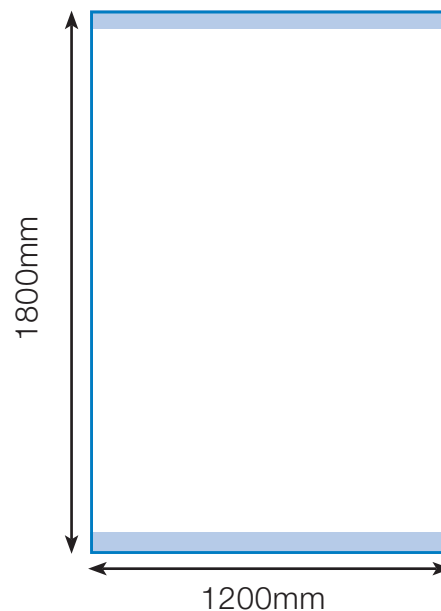
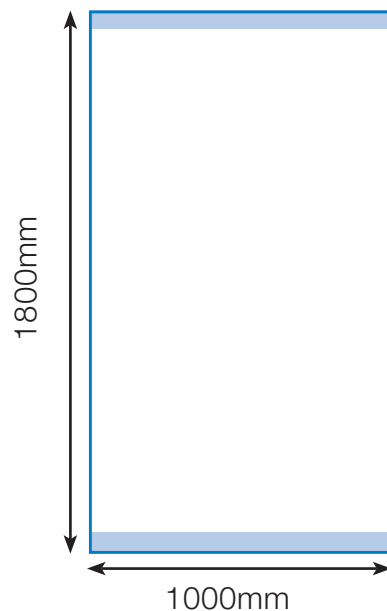
Display model

D4.6 - 100W
D4.6 - 100C
D4 Double 100S
D4 Double 100C

D4.8 - 120W
D4.8 - 120C

D4.8T - 120W
D4.8T - 120C

Finished banner visual area



Artwork size

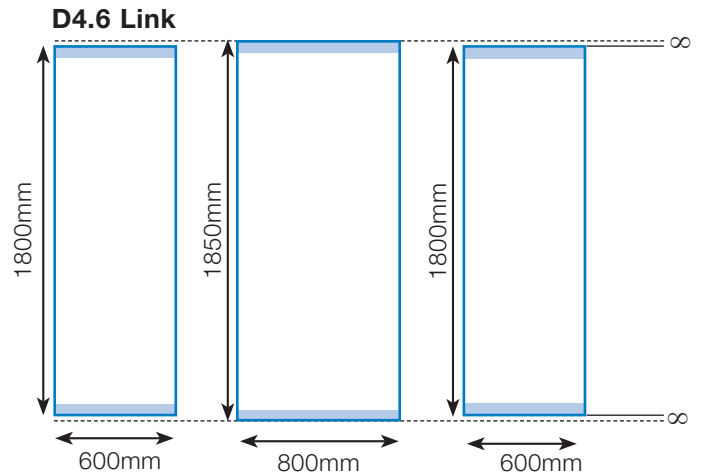
250mm x 450mm

300mm x 450mm

300mm x 500mm

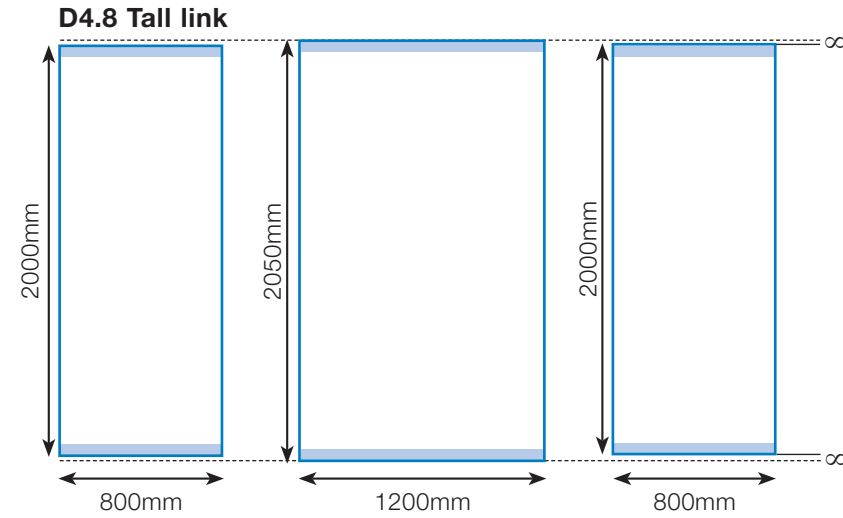
Digital Artwork Guidelines – D4 Linked Banner Specifications

All artwork files for each panel should be supplied at 25% of the finished dimensions described below.



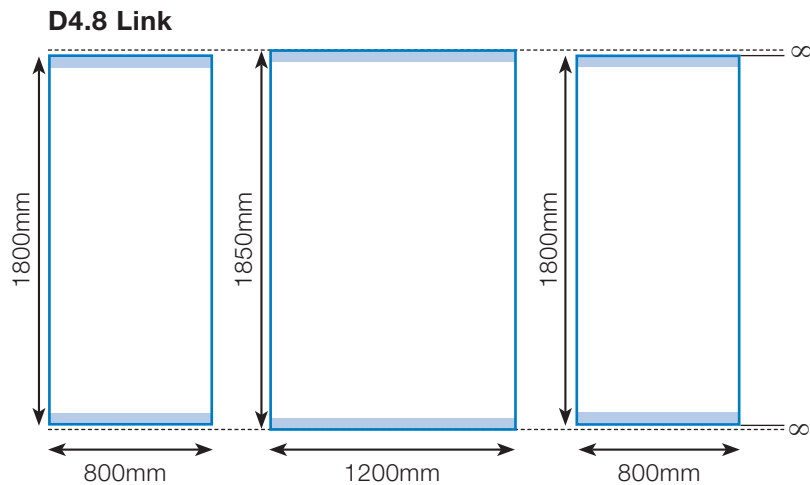
Artwork sizes

150mm x 450mm 200mm x 462.5mm 150mm x 450mm



Artwork sizes

200mm x 500mm 300mm x 512.5mm 200mm x 500mm



Artwork sizes

200mm x 450mm 300mm x 462.5mm 200mm x 450mm

NB: When aligning graphics across all three panels, the centre panel starts 25mm higher than the two external panels.

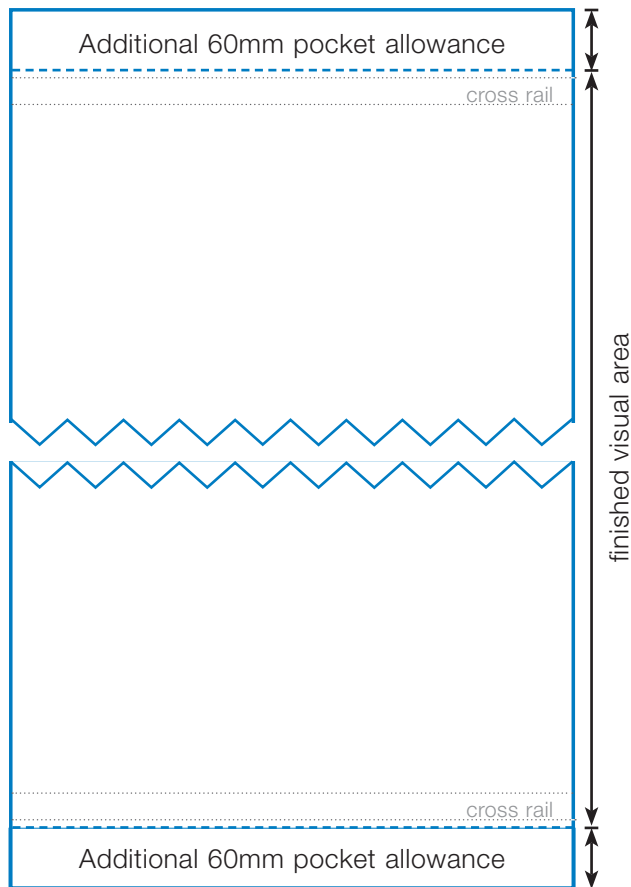
Key: ∞ = 25mm

Digital Artwork Guidelines – Finishing Instructions for Standard and Linked Displays

When outputting artwork add an extra 60mm on either end to create pockets for the battens.

Step 1:

Trim out banner leaving an extra 60mm on either end to create pockets for cross rails.



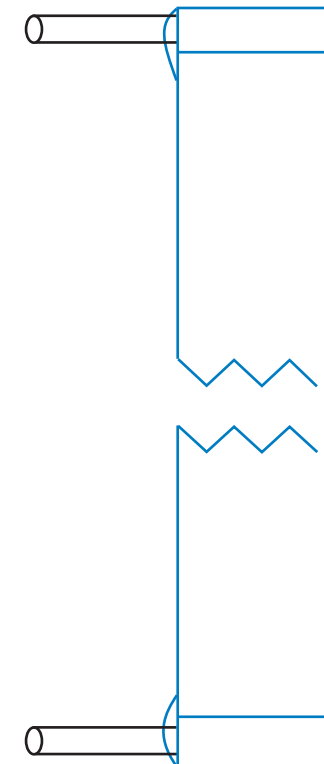
Step 2:

Apply double sided tape and fold over excess to create pocket



Step 3:

Insert cross rails

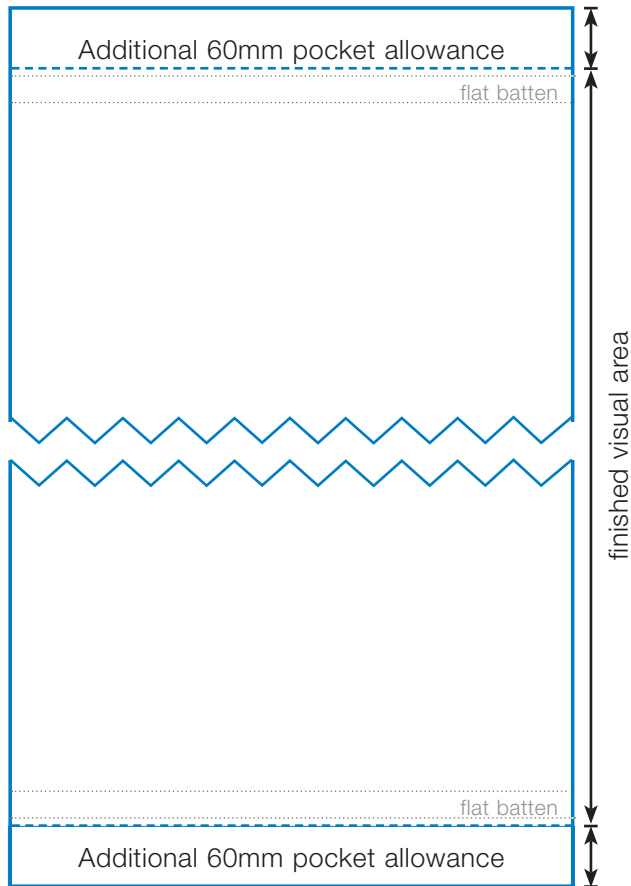


Digital Artwork Guidelines – Finishing Instructions for D4 Wide, D4 Curve and D4 Double 80 & 100 Displays

When outputting artwork add an extra 60mm on either end to create pockets for the battens. Always use the correct cutting template (please call us for one).

Step 1:

Trim out banner leaving an extra 60mm on either end to create pockets for cross rails



Step 2:

Apply double sided tape and fold over excess to create pocket



Step 3:

Use the D4 Cutting template to mark the hole positions correctly.

Punch holes in pockets

Insert flat or curved batten to check holes line up

